

FOR SALE

2710 Andrew Rd., Sherman, IL

Your business here!

- High traffic location in popular Sherman, IL
- Area continues to grow and thrive
- Two parcels totaling 1.53 acres
- Hard corner of Andrew Rd and Sherman Blvd/Bus 55
- Across from growing retail development containing Walgreens, United Community Bank, County Market, One Stop Auto Shop, Fire & Ale restaurant, plus many others

List Price: \$750,000
Taxes: \$5,556
Lot Size: 1.53 acres
Parcel #s: 06-25.0-406-020
06-25.0-406-018
Zoning: B-1



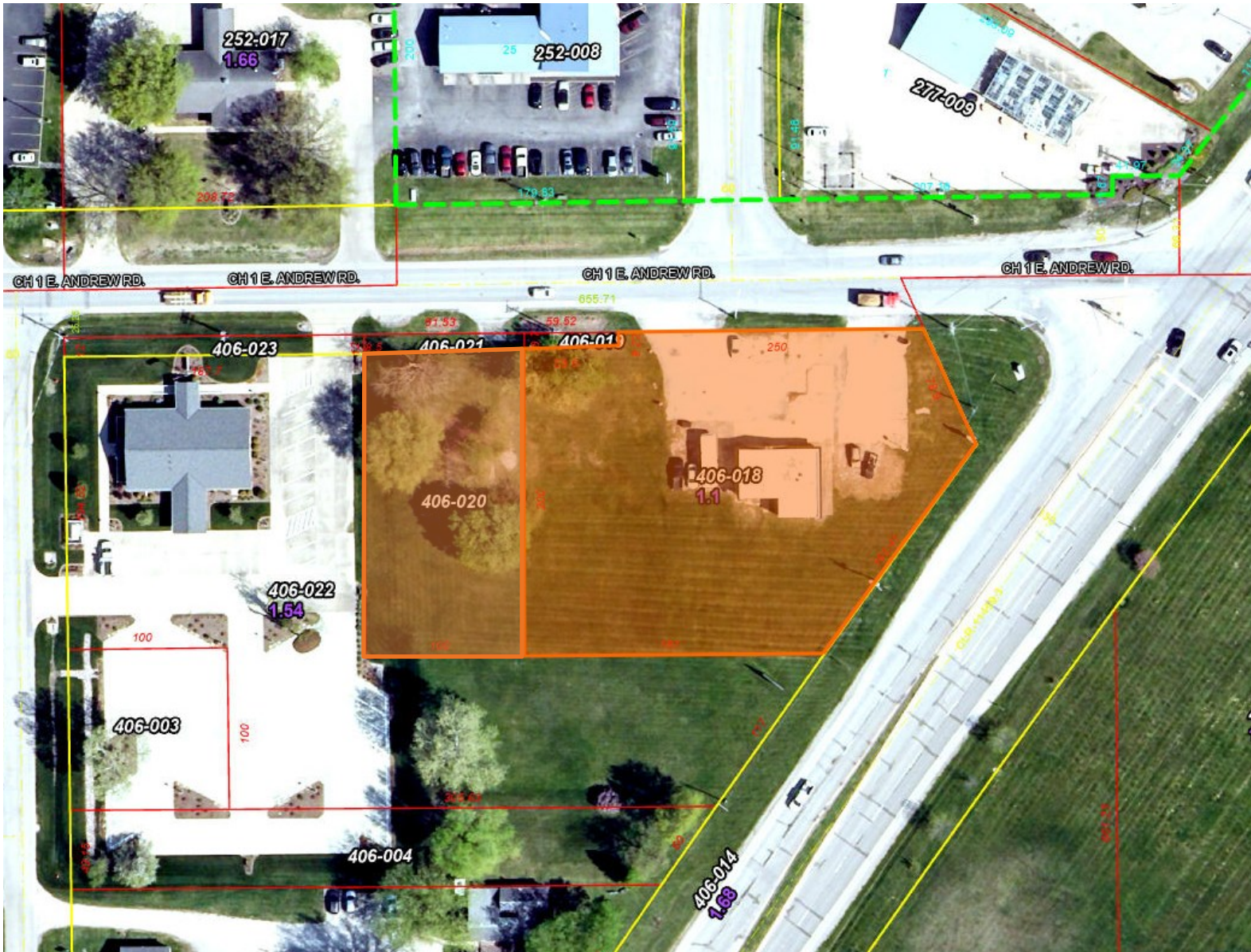
Curtis D. Tillett, Broker
217.553.7022
Curtis@curtistillett.com
www.curtistillett.com

The Real Estate Group
907 Clocktower Dr.
Springfield, IL 62704
217.726.3298

FOR SALE

2710 Andrew Rd., Sherman, IL

Plat Map



Curtis D. Tillett, Broker
217.553.7022
Curtis@curtistillett.com
www.curtistillett.com

The Real Estate Group
907 Clocktower Dr.
Springfield, IL 62704
217.726.3298

FOR SALE

2710 Andrew Rd., Sherman, IL



Curtis D. Tillett, Broker
217.553.7022
Curtis@curtistillett.com
www.curtistillett.com

The Real Estate Group
907 Clocktower Dr.
Springfield, IL 62704
217.726.3298

FOR SALE

2710 Andrew Rd., Sherman, IL



Curtis D. Tillett, Broker
217.553.7022
Curtis@curtistillett.com
www.curtistillett.com

The Real Estate Group
907 Clocktower Dr.
Springfield, IL 62704
217.726.3298